

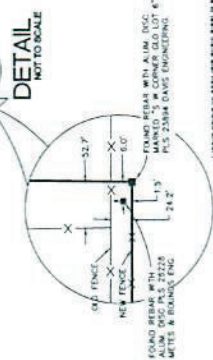
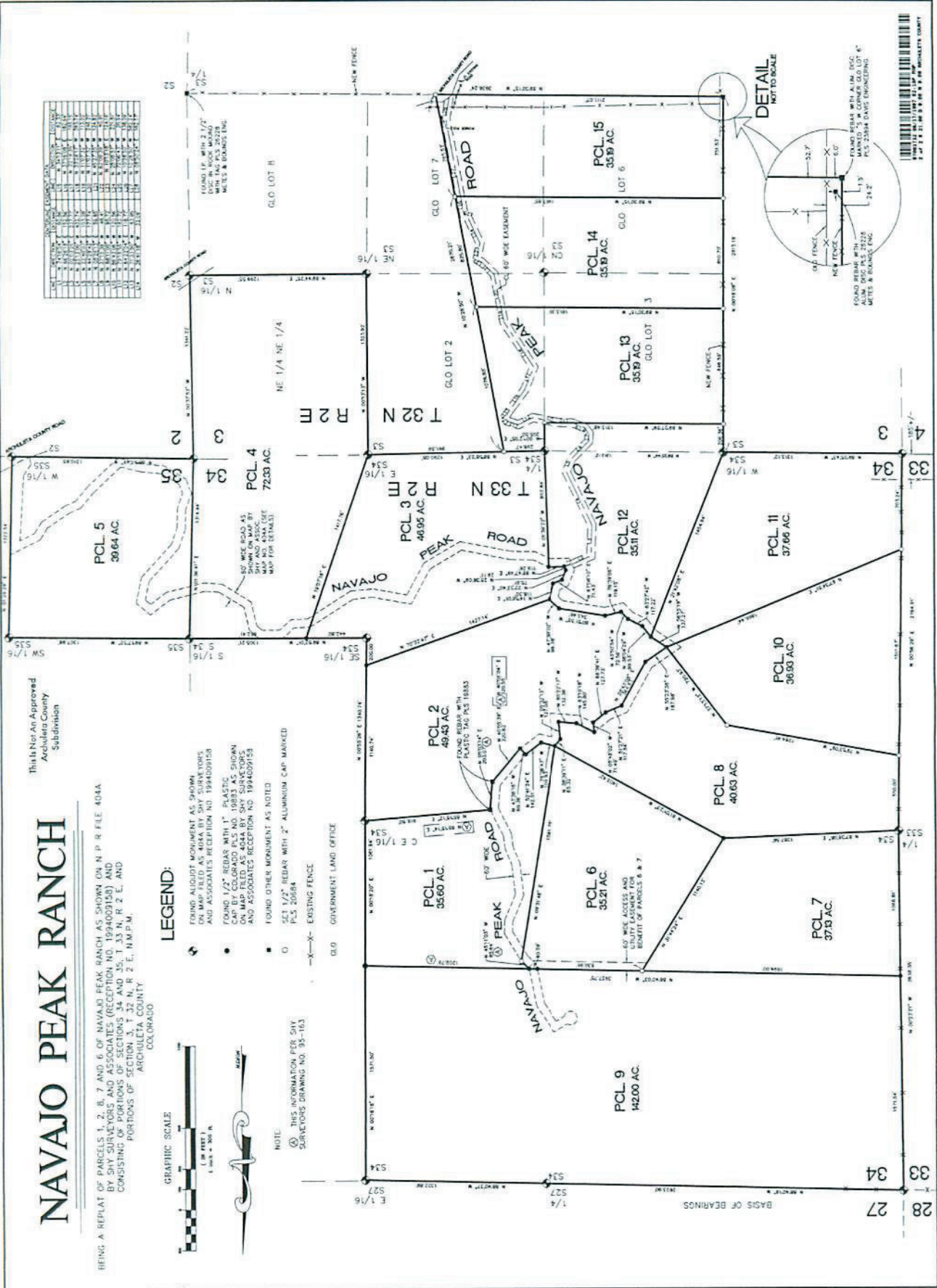
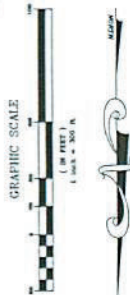
NAVAJO PEAK RANCH

BEING A REPLAT OF PARCELS 1, 2, B, 7 AND 6 OF NAVAJO PEAK RANCH AS SHOWN ON N.P.R. FILE 404A BY SHY SURVEYORS AND ASSOCIATES, (RECEPTION NO. 1994009158) AND CONSISTING OF PORTIONS OF SECTIONS 34 AND 35, T. 33 N., R. 2 E., AND PORTIONS OF SECTIONS 3, T. 32 N., R. 2 E., N.M.P.M., ARCHULETA COUNTY, COLORADO

LEGEND:

- FOUND ALIQUOT MONUMENT AS SHOWN ON MAP FILED AS 404A BY SHY SURVEYORS AND ASSOCIATES (RECEPTION NO. 1994009158)
- FOUND 1/2" REBAR WITH 1" PLASTIC CAP BY COLORADO PLS NO. 19883 AS SHOWN ON MAP FILED AS 404A BY SHY SURVEYORS AND ASSOCIATES (RECEPTION NO. 1994009158)
- FOUND OTHER MONUMENT AS NOTED
- SET 1/2" REBAR WITH 2" ALUMINUM CAP MARKED PLS 20564
- EXISTING FENCE
- GLO GOVERNMENT LAND OFFICE

NOTE: THIS INFORMATION PER SHY SURVEYORS DRAWING NO. 95-163



FOUNDED REBAR WITH ALUM. DUG CAP MARKED BY SHY SURVEYORS AND ASSOCIATES, (RECEPTION NO. 1994009158)



2 2 SHEETS

REPLAT PORTIONS OF NAVAJO PEAK RANCH ARCHULETA COUNTY / COLORADO



EMK & Associates, Inc. ENGINEERING • PLANNING • SURVEYING 1005 BALDWIN ST. • PASO ROBLES, CA 93446 • 805/238-5427

DATE	BY	CHECKED	K.C.E.

NO.	REVISION	DATE	BY

463A

15014530-368336-3812-27-114333 on 33