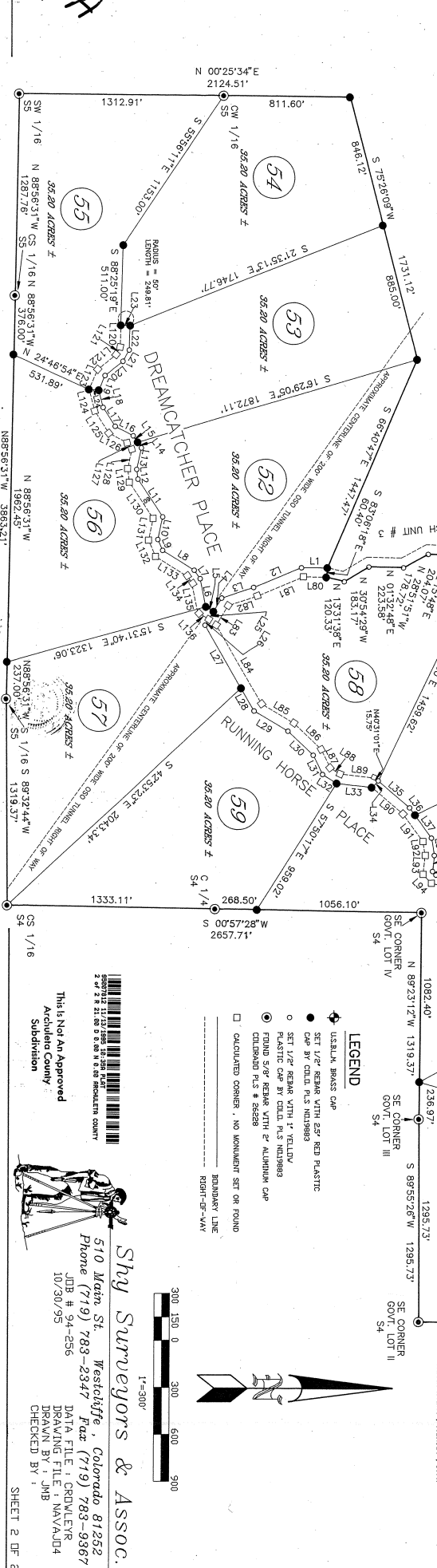


MAP OF NAWAJO RIVER RANCH UNIT # 4

IN SECTIONS 4 & 5, T32N, R2E, AND SECTION 33, T33N, R2E OF THE N.M.P.M. ARCHULETA COUNTY, COLORADO

COURSE	BEARING	DISTANCE	COURSE	BEARING	DISTANCE	COURSE	BEARING	DISTANCE	COURSE	BEARING	DISTANCE
L-1	S	00°51'45"W	186.90'	L-47	N	03°57'22"W	113.04'	L-93	S	83°36'10"E	122.02'
L-2	S	22°22'39"E	330.27'	L-48	N	12°16'11"E	141.98'	L-94	N	46°31'38"E	78.18'
L-3	S	18°17'31"E	216.24'	L-49	N	36°17'17"E	130.29'	L-95	N	12°15'35"E	235.28'
L-4	S	58°24'04"E	101.30'	L-50	N	68°46'39"E	85.88'	L-96	N	40°14'19"E	167.93'
L-5	S	72°50'25"W	157.25'	L-51	N	82°20'32"E	144.32'	L-97	N	75°33'52"E	144.32'
L-6	S	54°53'43"W	66.48'	L-52	N	85°36'50"E	155.31'	L-98	N	21°07'39"E	188.09'
L-7	S	33°59'03"W	239.59'	L-53	N	39°56'33"E	210.18'	L-99	N	06°11'09"E	217.98'
L-8	S	66°02'59"W	76.01'	L-54	N	17°52'35"E	567.10'	L-100	N	03°57'26"W	109.81'
L-9	S	62°53'19"W	148.11'	L-55	N	35°33'09"W	117.68'	L-101	N	12°16'11"E	120.64'
L-10	S	82°25'31"W	140.32'	L-56	N	58°15'33"W	227.68'	L-102	N	08°28'03"E	159.45'
L-11	S	77°24'34"W	140.32'	L-57	N	04°14'58"W	132.80'	L-103	N	82°26'03"E	159.45'
L-12	S	54°44'20"W	43.59'	L-58	N	57°11'31"E	230.53'	L-104	N	39°56'33"E	188.62'
L-13	S	54°44'20"W	43.59'	L-59	N	17°29'38"E	158.00'	L-105	N	17°52'35"E	524.54'
L-14	S	54°44'20"W	43.59'	L-60	N	57°11'31"E	230.53'	L-106	N	39°56'33"E	188.62'
L-15	S	54°44'20"W	43.59'	L-61	N	17°29'38"E	158.00'	L-107	N	17°52'35"E	524.54'
L-16	S	54°44'20"W	43.59'	L-62	N	57°11'31"E	230.53'	L-108	N	39°56'33"E	188.62'
L-17	S	54°44'20"W	43.59'	L-63	N	17°29'38"E	158.00'	L-109	N	17°52'35"E	524.54'
L-18	S	54°44'20"W	43.59'	L-64	N	57°11'31"E	230.53'	L-110	N	39°56'33"E	188.62'
L-19	S	54°44'20"W	43.59'	L-65	N	17°29'38"E	158.00'	L-111	N	17°52'35"E	524.54'
L-20	S	54°44'20"W	43.59'	L-66	N	57°11'31"E	230.53'	L-112	N	39°56'33"E	188.62'
L-21	S	54°44'20"W	43.59'	L-67	N	17°29'38"E	158.00'	L-113	N	17°52'35"E	524.54'
L-22	S	54°44'20"W	43.59'	L-68	N	57°11'31"E	230.53'	L-114	N	39°56'33"E	188.62'
L-23	S	54°44'20"W	43.59'	L-69	N	17°29'38"E	158.00'	L-115	N	17°52'35"E	524.54'
L-24	S	54°44'20"W	43.59'	L-70	N	57°11'31"E	230.53'	L-116	N	39°56'33"E	188.62'
L-25	S	54°44'20"W	43.59'	L-71	N	17°29'38"E	158.00'	L-117	N	17°52'35"E	524.54'
L-26	S	54°44'20"W	43.59'	L-72	N	57°11'31"E	230.53'	L-118	N	39°56'33"E	188.62'
L-27	S	54°44'20"W	43.59'	L-73	N	17°29'38"E	158.00'	L-119	N	17°52'35"E	524.54'
L-28	S	54°44'20"W	43.59'	L-74	N	57°11'31"E	230.53'	L-120	N	39°56'33"E	188.62'
L-29	S	54°44'20"W	43.59'	L-75	N	17°29'38"E	158.00'	L-121	N	17°52'35"E	524.54'
L-30	S	54°44'20"W	43.59'	L-76	N	57°11'31"E	230.53'	L-122	N	39°56'33"E	188.62'
L-31	S	54°44'20"W	43.59'	L-77	N	17°29'38"E	158.00'	L-123	N	17°52'35"E	524.54'
L-32	S	54°44'20"W	43.59'	L-78	N	57°11'31"E	230.53'	L-124	N	39°56'33"E	188.62'
L-33	S	54°44'20"W	43.59'	L-79	N	17°29'38"E	158.00'	L-125	N	17°52'35"E	524.54'
L-34	S	54°44'20"W	43.59'	L-80	N	57°11'31"E	230.53'	L-126	N	39°56'33"E	188.62'
L-35	S	54°44'20"W	43.59'	L-81	N	17°29'38"E	158.00'	L-127	N	17°52'35"E	524.54'
L-36	S	54°44'20"W	43.59'	L-82	N	57°11'31"E	230.53'	L-128	N	39°56'33"E	188.62'
L-37	S	54°44'20"W	43.59'	L-83	N	17°29'38"E	158.00'	L-129	N	17°52'35"E	524.54'
L-38	S	54°44'20"W	43.59'	L-84	N	57°11'31"E	230.53'	L-130	N	39°56'33"E	188.62'
L-39	S	54°44'20"W	43.59'	L-85	N	17°29'38"E	158.00'	L-131	N	17°52'35"E	524.54'
L-40	S	54°44'20"W	43.59'	L-86	N	57°11'31"E	230.53'	L-132	N	39°56'33"E	188.62'
L-41	S	54°44'20"W	43.59'	L-87	N	17°29'38"E	158.00'	L-133	N	17°52'35"E	524.54'
L-42	S	54°44'20"W	43.59'	L-88	N	57°11'31"E	230.53'	L-134	N	39°56'33"E	188.62'
L-43	S	54°44'20"W	43.59'	L-89	N	17°29'38"E	158.00'	L-135	N	17°52'35"E	524.54'
L-44	S	54°44'20"W	43.59'	L-90	N	57°11'31"E	230.53'	L-136	N	39°56'33"E	188.62'
L-45	S	54°44'20"W	43.59'	L-91	N	17°29'38"E	158.00'	L-137	N	17°52'35"E	524.54'
L-46	S	54°44'20"W	43.59'	L-92	N	57°11'31"E	230.53'	L-138	N	39°56'33"E	188.62'
L-139	S	33°49'37"W	194.48'	L-143	S	82°13'44"E	168.45'				
L-140	S	15°47'42"E	177.11'								
L-141	S	14°19'36"W	132.18'								
L-142	S	33°39'59"E	179.38'								
L-143	S	82°13'44"E	168.45'								



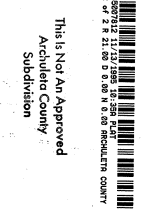
COURSE	BEARING	DISTANCE
L-139	S	33°49'37"W 194.48'
L-140	S	15°47'42"E 177.11'
L-141	S	14°19'36"W 132.18'
L-142	S	33°39'59"E 179.38'
L-143	S	82°13'44"E 168.45'

LEGEND

- US&LK BRASS CAP
- SET 1/2" REBAR WITH 2" KEEL PLASTIC
- CAP BY C.D.L.P.S. N189883
- SET 1/2" REBAR WITH 1" YELLOW PLASTIC CAP BY C.D.L.P.S. N189883
- FOUND 5/8" REBAR WITH 1" ALUMINUM CAP CALIFORNIA P.L.S. # 26268
- CALCULATED CORNER, NO MONUMENT SET OR FOUND
- BOUNDARY LINE
- - - - - RIGHT-OF-WAY

NOTES

1. THIS SURVEY WAS CONDUCTED IN ACCORDANCE WITH THE SURVEYING ACTS OF 1908 AND 1917. THE SURVEYOR HAS NOTED THE PRESENCE OF AN OLD SURVEY POINT AT THE INTERSECTION OF THE SECTION CORNERS AND THE SECTION CORNER. THIS POINT IS BEING RECORDED FOR THE PURPOSES OF THIS SURVEY. THE SURVEYOR HAS NOTED THE PRESENCE OF AN OLD SURVEY POINT AT THE INTERSECTION OF THE SECTION CORNERS AND THE SECTION CORNER. THIS POINT IS BEING RECORDED FOR THE PURPOSES OF THIS SURVEY.



This is Not an Approved Archuleta County Subdivision

Shy Surveyors & Assoc.
 510 Main St. Westcliffe, Colorado 81252
 Phone (719) 783-9347 Fax (719) 783-9367
 JMB # 94-296
 10/30/95
 DATA FILE: CROWLETRB
 DRAWING FILE: NAWAJO4
 DRAWN BY: JMB
 CHECKED BY: JMB

